



MANUEL F20



MANUAL F20



MANUAL F20



MANUAL F20



HANDBUCH F20



# F20



Scannez le code QR pour les données de votre machine et le journal de filtre numérique.

Escanee el código QR para los datos de su máquina y el registro de filtro digital.

Scan the QR code for your machine data and digital filter log.

Scan the QR code for your machine data and digital filter log.

Scannen Sie den QR-Code für Ihre Maschinendaten und das digitale Filterprotokoll.



# EC Type Declaration of Conformity Unit

We,

**FRESHFILTER BV**

*(supplier's name)*

**Ruisvoorn 2  
4941 SB Raamsdonksveer  
The Netherlands**

*(supplier's address)*

declare under our sole responsibility that the product:

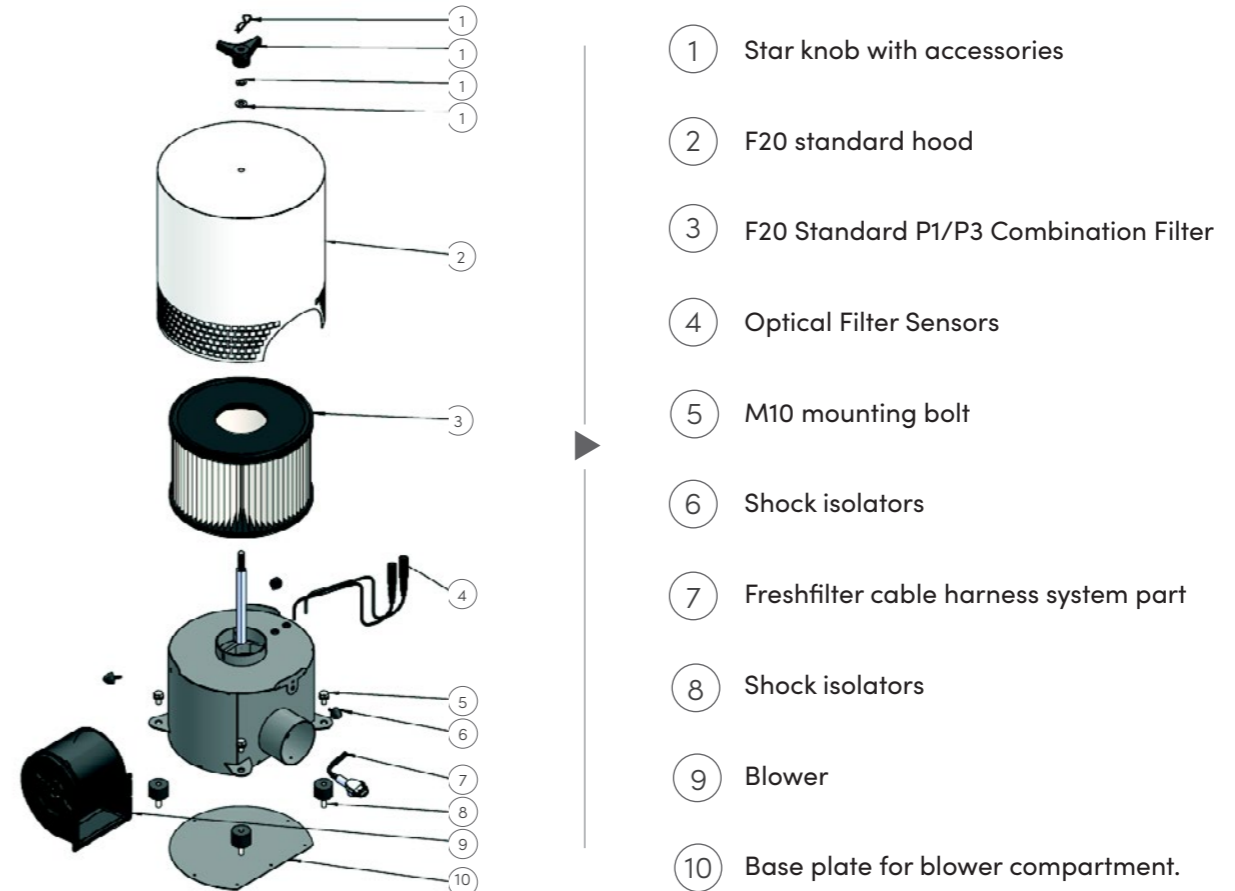


## TABLE OF CONTENTS

1)	<b>SYSTEM INFORMATION</b>	2
	TECHNICAL SPECIFICATIONS	
	INSTALLATION CRITERIA	
2)	<b>OVERPRESSURE FILTERS F20</b>	4
	INSTRUCTION FILTER INSTALLATION F20	
	INSTRUCTION DIGITAL FILTER REGISTRATION APP	
	ORDER NUMBER FILTERS F20	
3)	<b>MAINTENANCE AND INSPECTION F20</b>	6
	MAINTENANCE OF F20	
	INSPECTION BY YOUR SERVICE DEALER	
5)	<b>CERTIFICATION &amp; FILTER LOG</b>	12
	MACHINE CERTIFICATION	
	FILTER LOG	

## 1) SYSTEM INFORMATION F20 & INSTALLATION CRITERIA

The F20 overpressure filter system has the following standard components and specifications:



This Declaration of Conformity is suitable to the European Standard EN 45014 General Criteria for supplier's Declaration of Conformity. The basis for the criteria has been found in international documentation, particularly in ISO/IEC, Guide 22, 1982, Information for manufacturer's Declaration of Conformity with standards or other technical specifications

*Name, type or model, batch or serial number, possible source and number of items to which this declaration relates is in conformity with European Harmonised Standards as published in:*

**Official Journal of the EC : Issue : 2011/C 31/01**

*Issue of publication of the list of harmonised standards*

The compliance of the product has been based on:

EN 61000-6-3:2001	[Emissions]
EN 61000-6-1:2001	[Immunity]
NA	[Safety]
NA	[Radio part]

*Title and or number and date of issue of the applies standards*

following the provisions of the Directives (if applicable)

- ✓ EMC-directive : 2004/108/EC
- ✓ Electrical Safety: 23/73/EC
- ✓ R&TTE-directive: 99/5/EC
- ✓ Machinery-directive: 2006/42/EC

*These conclusions are based on test reports:*

**RAAMSDONKSVEER, 01-01-2021**

*Place and date of issue*

**G. Mols**

*name of responsible for CE marking*




Specifications F20	
Dimensions	Ø 350 mm, height 420 mm (830 mm in high configuration)
Material	STAINLESS STEEL 304
Empty weight	13 kg (without filters)
Voltage	24V (12V available)
Noise Level	< 60 Db
Capacity	40 - 120 m <sup>3</sup> per hour

When mounting the F20 on your machine, it's important that the overpressure filter system does not hinder normal operations. The following should also be taken into account:  
installation requirements:

- 1 The inlet opening of the overpressure filter system is positioned in such a way that the suction of exhaust gases is avoided.
- 2 The exhaust opening of the overpressure filter system in the cabin is positioned in such a way that it does not lead to an obstructed airflow.
- 3 The monitoring equipment is installed in such a way that the equipment's output value can be observed in the workplace.
- 4 The climate control system can only draw in air via the overpressure filter system. When mounted with direct standard air inlet, the system has a recirculation mode.

## 2) OVERPRESSURE FILTERS F20

The type of filters the overpressure filter system should be equipped with depends on the nature and/or concentration of the impurity. The characteristics of the most common filters are shown in the overview below:




**P1 / P3 Combination Dust Filter**

**Standard**  
P1 : F5 according to ISO16890  
P3: H13 according to EN1822

**Function**  
P1: Pre-filter, protection of successive filters.

P3: Capturing (toxic) particulate matter such as asbestos and quartz dust.

**Replacement frequency P1 & P3 dust filter**  
up to 6 months (1080 hours) or upon highly visible contamination.



**Activated Carbon Filter (3.5 & 10 kg)**

**Standard**  
Format according to EN12941/EN14387

**Carbon type & Function**  
Capturing toxic or unpleasant vapours and/or odours.

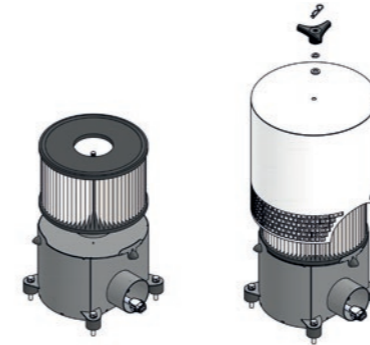
A	Aromatic hydrocarbons; boiling point > 65 C petrol, oil, minerals.
B	Inorganic compounds chlorine, hydrocyanic acid, cyanide
E	Acid gases hydrochloric acid, sulphur dioxide, formic acid
K	Amines ammonia, ammonia compounds, aniline
HG	Organic mercury compounds mercury, methyl mercury, mercuric bromide
X	Aromatic hydrocarbons; boiling point <65 C acetone, chloroform, vinyl bromide

**Replacement frequency of activated carbon filters**  
maximum 13 weeks (540 hours), after saturation or after every remediation.

## 2.1) INSTRUCTION FILTER INSTALLATION



Attention! Use the appropriate personal protective equipment (PPE) when opening.

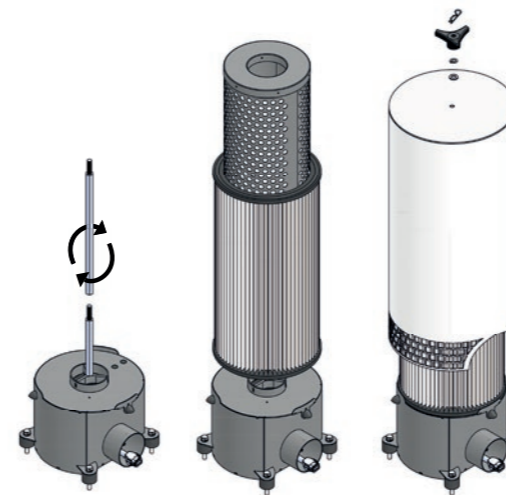
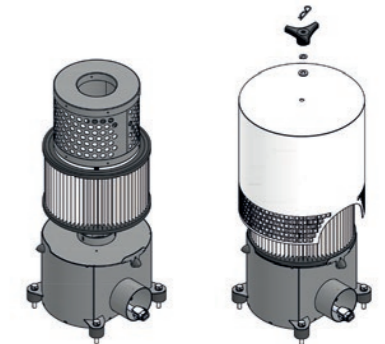


### INSTALLATION OF P1/P3 FILTER LAYER

- 1 Unscrew the star knob and remove the cover completely from the base.
- 2 Place the P1/P3 dust filter on the base and make sure the filter does not stick on the edge.
- 3 Replace the cover and tighten the star knob firmly. This ensures that the filter remains in place.

### INSTALLATION OF THE P1/P3 I.C.M. 3.5 KG ACTIVATED CARBON FILTER

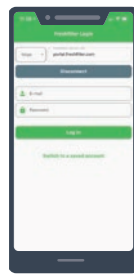
- 1 Unscrew the star knob and remove the cover completely from the base.
- 2 Place the P1/P3 dust filter on the base and make sure the filter does not stick on the edge. Then slide the 3.5 kg activated carbon filter into the P1/P3 combination filter.
- 3 Replace the cover and tighten the star knob firmly. This ensures that the filter remains in place.



### INSTALLATION OF THE P1/P3 I.C.M. 10 KG ACTIVATED CARBON FILTER (NETHERLANDS)

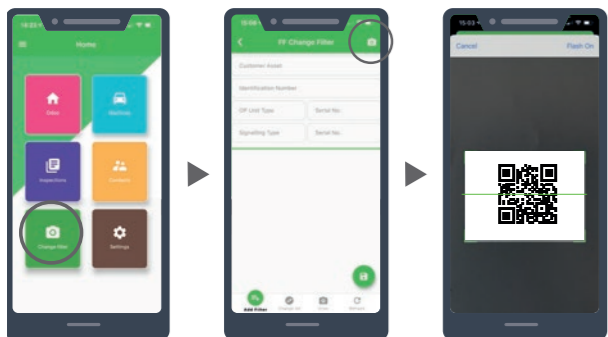
- 1 Unscrew the star knob and remove the cover completely from the base.
- 2 Extend the wire end with the expansion part as shown.
- 3 Place the high P1/P3 dust filter on the base and make sure the filter does not stick on the edge. Then slide the 10 kg activated carbon filter into the P1/P3 combination filter.
- 4 Replace the high cover and tighten the star knob firmly. This ensures that the filter remains in place.

### 2.3) INSTRUCTION DIGITAL FILTER REGISTRATION



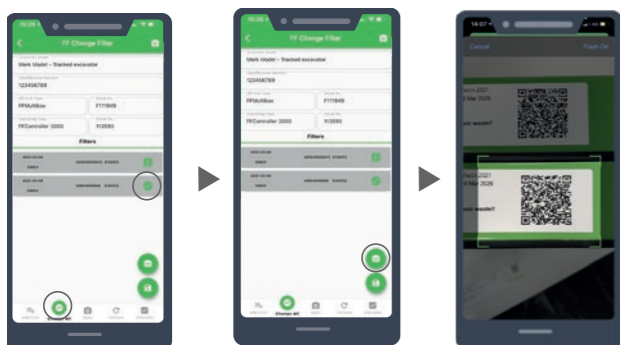
Filters can be digitally registered via the Filter Switch App, which is available for free in the App and Playstore. Once installed, you can log in with the log-in info you received. Don't have log-in info? Request it via the app login screen.

To register a new filter, follow these steps:



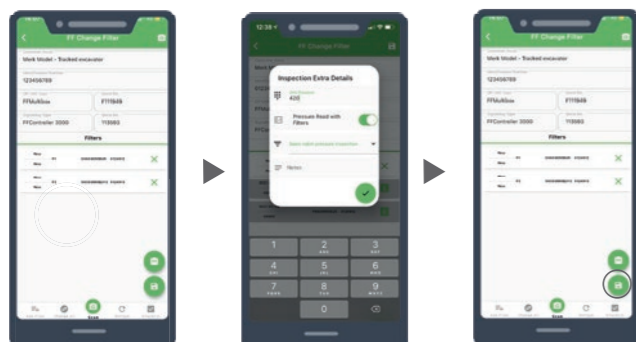
1 After logging in, you can register the new filters by pressing the 'Change filter' icon.

2 A new screen will open; press the camera icon at the top right corner of your screen. Scan the machine QR that can be found on the inspection sticker.



3 The machine data will be immediately visible. The previously registered filters can be replaced by pressing the green switch icon. Replace all filters? Then press 'change all' at the bottom of your screen.

4 After that, press the camera icon to register the new filter. All filters have QR codes; scan the codes of all filters to be installed.



5 To save the registered filters, press the inspection icon in the bottom right corner. This is where you can enter the maximum pressure and add a comment if necessary. Press the green tick mark to save the information.

6 Finally, press the 'save' icon at the bottom right to permanently confirm the filter change. The change will be processed immediately.

### 3) MAINTENANCE & INSPECTION F20

In addition to the timely replacement of filters, the F20 can be cleaned with a damp cloth (filter tray and compartment). Use the correct PPE while cleaning the system. It is also recommended to perform a visual inspection every month or after every 150 hours of operation.



#### INSPECTION F20

Your overpressure filter system needs to be inspected annually according to the current standards in your country. This can be done by an authorized dealer. The dealer will inspect and certify the system with a validity of one year. Upon successful certification, the machine will be provided with an inspection sticker. This sticker shows at a glance how long the certification is valid. The certification can also be viewed online by scanning the QR code. The digital filter log can also be found via the QR code. When checking, the operator or controller has all the necessary information at hand. An additional benefit of the QR code is that service and/or filters can be requested. Your dealer will receive an immediate notification of your request and can quickly provide service.

The F20 is manufactured to the strictest requirements and is suitable for any national or international standards. The standards vary globally, but the system will always be in compliance due to the following tested features of the F20:

- ✓ The overpressure in the cabin is more than 100 Pa and less than 300 Pa with an air exchange between 40 and 120 m<sup>3</sup>. The pressure is tested according to the standard.
- ✓ The overpressure filter system is designed in such a way that the drawn-in air can only enter the workspace via the filter gasket.
- ✓ There is a green indicator\* that can be seen from the workplace that shows whether the overpressure filter system is in use and filters are mounted. There is also a device allowing the current pressure to be read and it gives an acoustic and optical signal if it exceeds the limit value.
- ✓ If a (HC / CO<sub>2</sub> / H<sub>2</sub>S / NH<sub>4</sub>) sensor is available (max 4 sensors possible), it gives an alert above the set limit value.
- ✓ It is possible to start the overpressure filter system automatically when starting the machine. It is possible to turn off the system after startup.
- ✓ The system has the ability to be expanded with a recirculation unit in the cabin.

\* There is the option to expand the overpressure filter system with an external green indicator for outside the cabin.

Your service dealer can carry out this periodic inspection annually for you. You can find your dealer's contact details at the back of this user manual.



Filter type Filter Type Filter Typ Type de filtre Tipo de filtro	Serial Number Serial Number Serien nr Numéro de série Número de serie	Location Location Ort Lieu Localización	Installation date Installation date Einbaudatum Date de montage Fecha de montaje	Removal date Removal date Entfernungsdatum date de suppression fecha de remocion	Maximum pressure Maximum pressure Maximaler Druck Pression maximum Presión máxima
			- -	- -	Pa
			- -	- -	Pa
			- -	- -	Pa
			- -	- -	Pa
			- -	- -	Pa
			- -	- -	Pa
			- -	- -	Pa
			- -	- -	Pa
			- -	- -	Pa
			- -	- -	Pa
			- -	- -	Pa
			- -	- -	Pa
			- -	- -	Pa
			- -	- -	Pa
			- -	- -	Pa
			- -	- -	Pa
			- -	- -	Pa
			- -	- -	Pa
			- -	- -	Pa
			- -	- -	Pa
			- -	- -	Pa
			- -	- -	Pa
			- -	- -	Pa
			- -	- -	Pa
			- -	- -	Pa
			- -	- -	Pa
			- -	- -	Pa
			- -	- -	Pa
			- -	- -	Pa
			- -	- -	Pa
			- -	- -	Pa
			- -	- -	Pa
			- -	- -	Pa
			- -	- -	Pa
			- -	- -	Pa
			- -	- -	Pa
			- -	- -	Pa
			- -	- -	Pa
			- -	- -	Pa

Filter type Filter Type Filter Typ Type de filtre Tipo de filtro	Serial Number Serial Number Serien nr Numéro de série Número de serie	Location Location Ort Lieu Localización	Installation date Installation date Einbaudatum Date de montage Fecha de montaje	Removal date Removal date Entfernungsdatum date de suppression fecha de remocion	Maximum pressure Maximum pressure Maximaler Druck Pression maximum Presión máxima
			- -	- -	Pa
			- -	- -	Pa
			- -	- -	Pa
			- -	- -	Pa
			- -	- -	Pa
			- -	- -	Pa
			- -	- -	Pa
			- -	- -	Pa
			- -	- -	Pa
			- -	- -	Pa
			- -	- -	Pa
			- -	- -	Pa
			- -	- -	Pa
			- -	- -	Pa
			- -	- -	Pa
			- -	- -	Pa
			- -	- -	Pa
			- -	- -	Pa
			- -	- -	Pa
			- -	- -	Pa
			- -	- -	Pa
			- -	- -	Pa
			- -	- -	Pa
			- -	- -	Pa
			- -	- -	Pa
			- -	- -	Pa
			- -	- -	Pa
			- -	- -	Pa



Digital filter registration is possible through an App on your smartphone. Ask your service dealer about the options.

Digital filter registration is possible through an App on your smartphone. Ask your service dealer about the options.

Die digitale Filterregistrierung ist über eine App auf Ihrem Smartphone möglich. Fragen Sie Ihren Servicehändler nach den Möglichkeiten.

L'enregistrement du filtre numérique est possible via une application sur votre smartphone. Renseignez-vous auprès de votre revendeur de services sur les possibilités.

El registro de filtro digital es posible a través de una aplicación en su teléfono inteligente. Pregunte a su distribuidor de servicio sobre las posibilidades.



Your Service Dealer

